

TRAXX

KOVARA[®] VAPORSHIELD[™]

Save money and time

on moisture protection

for flooring

KOVARA[®] / VAPORSHIELD[™] is a TRAXX Moisture Barrier Product

KOVARA[®] VAPORSHIELD[™]

MOISTURE BARRIERS

KOVARA® / VAPORSHIELD™ Moisture Barriers

A faster and easier way to protect floors from moisture and alkalinity damage.

KOVARA® / VAPORSHIELD™ moisture barriers are designed to be installed onto concrete floor slabs and below floor coverings to protect these materials – as well as their adhesives – from any staining, warping, or mold resulting from moisture and alkaline salts infiltrating through the concrete slab.

KOVARA® / VAPORSHIELD™ is now a TRAXX moisture mitigation product.

At TRAXX Corporation, we're dedicated to advancing products used to solve moisture problems in flooring assemblies. In 2023, TRAXX acquired GCP Applied Technologies, Inc. floor underlayments. The VERSASHIELD® membranes and associated flooring tape products are now part of TRAXX's premier moisture mitigation portfolio. These products are sold under the new name, KOVARA® / VAPORSHIELD™, and are backed by TRAXX's dedicated field support team around country.

KOVARA® / VAPORSHIELD™ moisture barriers flooring protection

- Moisture and alkalinity protection up to 100% RH
- No shotblasting required; self-leveling needed only for uneven floors
- Over 100 million square feet of flooring protected



Quick and easy moisture mitigation for flooring contractors

- Save up to half the time of a typical liquid epoxy application
- Reduce labor costs and improve project capacity
- Gain the assurance of a 10-year limited replacement warranty
- Get support from TRAXX's technical service team for successful job completion

Accelerated, clean flooring protection for building owners

- Reduce business disruption – up to 100% with overnight renovations
- Accelerate building occupancy on new construction
- Does not support mold or mildew growth

KOVARA® / VAPORSHIELD™ Moisture Barrier Installation compared to Epoxies

KOVARA® / VAPORSHIELD™ moisture barriers are typically installed in one day and you are back in business the next day.

	Epoxies	KOVARA® Moisture Barriers
Day 1	<ul style="list-style-type: none"> • Demolition • Shotblasting • Crack filling • Epoxy mixing and application • Epoxy curing 	<ul style="list-style-type: none"> • Demolition • Crack filling • KOVARA® product installation • Adhesive application • Flooring installation
Day 2	<ul style="list-style-type: none"> • Mixing and application of self-leveling underlayment • Self-leveling underlayment curing 	<ul style="list-style-type: none"> • Open for business
Day 3	<ul style="list-style-type: none"> • Adhesive application • Flooring installation 	<ul style="list-style-type: none"> • Open for business

KOVARA® / VAPORSHIELD™ Moisture Barrier Products

Offer a Wide Range of Solutions

Protection Up to 100% RH

- **KOVARA® / VS™ MBX** product protects floor coverings and adhesives against alkalinity and moisture in concrete slabs up to 100% RH. It can be identified by its dark blue surface.
- **KOVARA® / VS™ MBX seam tape** (2.5" wide x 180' long, blue color) covers the seams between cuts of KOVARA® / VS™ MBX moisture barriers.
- **KOVARA® / VS™ Double-Sided Tape** (4" wide x 100' long, white color) seals the seams of regular KOVARA® / VS™

MBX product installations to create a monolithic barrier against moisture and alkalinity. When using the Box Grid installation method for moderate or heavy traffic or rolling loads, it adheres MBX membrane to the concrete substrate.

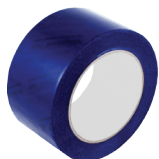
Protection Up to 95% RH

- **KOVARA® / VS™ 95** product protects floor coverings and adhesives against alkalinity and moisture in concrete slabs up to 95% RH. It can be identified by its gray surface.
- **KOVARA® / VS™ 95 Seam Tape** (2" wide x 180' long, gray color) covers the seams between cuts of KOVARA® / VS™ 95 moisture barriers.
- **KOVARA® / VS™ Double-Sided Tape** (4" wide x 100' long, white color) adheres KOVARA® / VS™ 95 membrane to the concrete substrate, when using the Box Grid installation method for moderate or heavy traffic or rolling loads.

KOVARA® / VS™ MBX INSTALLATION PRODUCTS



KOVARA® / VS™ MBX moisture barriers

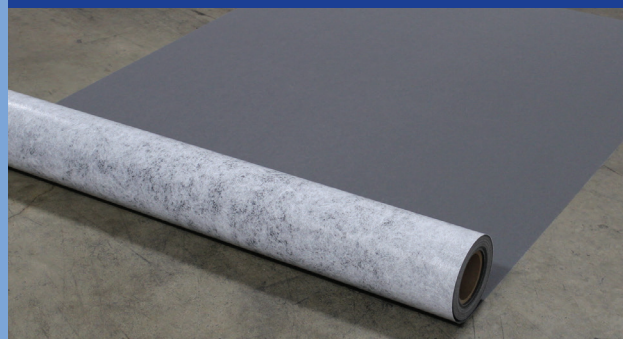


KOVARA® / VS™ MBX seam tape



KOVARA® / VS™ double-sided tape

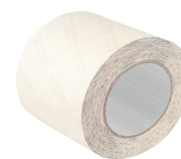
KOVARA® / VS™ 95 INSTALLATION PRODUCTS



KOVARA® / VS™ 95 moisture barriers



KOVARA® / VS™ 95 seam tape



KOVARA® / VS™ double-sided tape (heavy rolling loads)

KOVARA® Moisture Barriers – Physical Properties

Properties	Testing Method	Typical Values
Roll Size	-----	5' x 144' (720 sq. ft.)
KOVARA® / VAPORSHIELD™ MBX basic weight	ASTM D2646	12.5 lbs. per 100 sq. ft.
KOVARA® / VAPORSHIELD™ 95 basic weight	ASTM D2646	11.5 lbs. per 100 sq. ft.
KOVARA® / VAPORSHIELD™ MBX thickness	ASTM D5729	28.0 mils
KOVARA® / VAPORSHIELD™ 95 thickness	ASTM D5729	24.0 mils
KOVARA® / VAPORSHIELD™ MBX permeance	ASTM E96	<0.1 perms
KOVARA® / VAPORSHIELD™ 95 permeance	ASTM E96	<0.1 perms
Maximum PH allowed	-----	12
Fungi and mold resistance	ASTM G21	Does not sustain mold growth
Flammability	ASTM D2859	Passes
Dimensional stability	ASTM D7570	Passes
Radiant panel	ASTM E648	Passes class I
Smoke density	ASTM E662	<450
Residual indentation	ASTM F970	Meets most floor covering requirements

KOVARA® / VAPORSHIELD™ Moisture Barriers Approved Floor Coverings

The following products have been approved for KOVARA® / VAPORSHIELD™ moisture barrier installations. For any products not listed, contact TRAXX Corporation for additional information.

KOVARA® / VAPORSHIELD™ MBX and 95 Moisture Barriers Approved Floor Coverings	
Carpet tile	Natural stone
VCT-vinyl composition tile	Broadloom carpet
SVT-solid vinyl tile	PVC backed carpet
LVT/LVP-luxury vinyl tile/luxury vinyl plank	Urethane foam backed carpet
SDT-static dissipative tile	Compressed urethane backed carpet
Laminate flooring	Recycled backed carpet
Ceramic tile	Engineered wood-floating or direct glue
Porcelain tile	Bamboo
Woven synthetic-backed stretch-in, double glue and direct glue carpet	

The specialty floors below require review of existing conditions and use to ensure the best installation. Please contact TRAXX Corporation for a warranty registration form.

KOVARA® / VAPORSHIELD™ MBX 95 Moisture Barriers Specialty Floor Coverings
Commercial and residential sheet vinyl flooring
Rubber flooring
Resilient sports flooring
Wood court flooring

Visit us at traxxcorp.com/literature
for complete installation instructions and
warranty information.

TRAXX is a leading name in of
floorcovering installation products, high-
performance waterproofing products,
and specialty systems. More information
is available at www.traxxcorp.com

We hope the information here will be helpful. It is based on data and knowledge considered to be true and accurate, and is offered for consideration, investigation and verification by the user, but we do not warrant the results to be obtained. Please read all statements, recommendations, and suggestions in conjunction with our conditions of sale, which apply to all goods supplied by us. No statement, recommendation, or suggestion is intended for any use that would infringe any patent, copyright, or other third party right.

TRAXX Corporation, TRAXX, VERSASHIELD and KOVARA are trademarks, which may be registered in the United States and/or other countries, of TRAXX Corporation. This trademark list has been compiled using available published information as of the publication date and may not accurately reflect current trademark ownership or status.

© Copyright 2024 TRAXX Corporation. All rights reserved.

HEADQUARTERS: 1201 E. Lexington Avenue · Pomona, CA 91766 | USA.

KOVARA 6 - Page Brochure - English

JULY 2024

